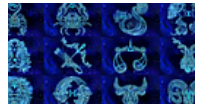


Today's Horoscope – June 12, 2025: Check horoscope for all sun signs

16 hours ago



How locals helped crack crime case, save Meghalaya's 'image'

19 hours ago



School bus carrying 11 kids overturns in Bengaluru

10 June 2025, 13:11 IST



DH PICKS



Transgenders continue to face discrimination in Pakistan despite 2018 law...

5 hours ago



Musk's act of contrition isn't enough for Tesla

5 hours ago



RBI sends conflicting signals with surprise moves

6 hours ago



Mongolia's 'Dragon Prince' dinosaur was forerunner of T rex

18 hours ago



Samiti Secretary Y K Ganesh told mediapersons here, on Thursday, that the borrowers tend to repay loans regularly. But labourers who default on their repayment are forced to work as bonded labourers, he said.

“Many labourers are from tribal communities like Erava, Kuruba and Paniya, who live in line houses (quarters) in coffee plantations,” he said.

Ganesh said, “When the labourers are not in a condition to repay the loans, the coffee estate owners exploit them by drawing more work for lower wages. The district administration and the labour department should provide justice to such exploited labourers.”

There are also planters who provide good facilities to the plantation labourers. But some planters have been exploiting the labourers

“The planters are bound to pay minimum wages of Rs 324 per day as per the law. The planters, who own more than four acres of land, should provide all basic facilities to their labourers. But the regulations are flouted with impunity,” he charged. Samiti President Y A Ravi alleged that the plantation owners who provide loans to workers create fake ledgers and manipulate the figures.

Published 18 July 2019, 22:06 IST

Bonded Labour

Coffee Planters